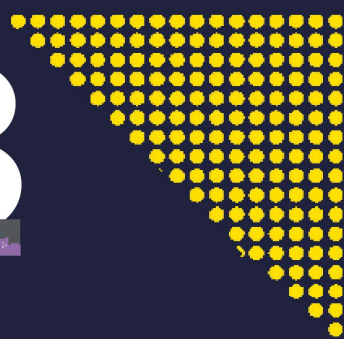


U.I. Los Angeles

# URBAN MARKETPLACE 23

Make a Deal, Make a Difference



## CONNECTING TO CAPITAL

- WEDNESDAY, MARCH 22
- 7:30 AM to 12:00 PM
- The California Endowment  
1000 N. Alameda Street Los Angeles, CA 90012

## KEYNOTE SPEAKERS



**Fiona Ma, CPA**

*Treasurer,  
State of California*



**Tiffany Haddish**

*Actor, Comedian, Writer  
and Producer*

## PANEL DISCUSSION

### ACCESSING CAPITAL AS A DIVERSE INVESTOR IN REAL ESTATE

*Josh Childress, CEO of Landspire Investments, and Jen McElyea, Managing Partner of Ethos Real Estate will chat with Robert Jue, CEO of Standard Real Estate Investments about their experiences raising capital as diverse, emerging real estate investment managers based here in Southern California. They will share advice and discuss ways in which we, collectively, can move to reduce the funding gap for minorities in our industry.*



**Robert Jue**  
CEO  
Standard Real Estate Investment



**Jennifer McElyea**  
Managing Partner  
Ethos Real Estate



**Josh Childress**  
Chief Executive Officer  
Landspire Investments

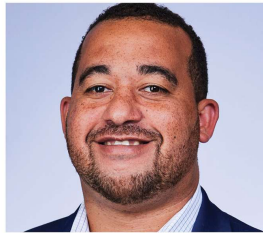
# ROUND TABLE TOPICS

---

## Diaspora Groceries: Healthy Food and Financial Literacy



**Richea Jones**  
Board Member, Project Manager  
Diaspora Groceries



**Chris Pearson**  
Senior Vice-President  
Development Planning  
Hudson Pacific Properties



**David Sheldon**  
Associate Principal  
Perkins&Will

## Decarbonization for L.A.



**Heather Joy Rosenberg**  
Associate Principal,  
Resilience Skills Leader—  
Americas ARUP

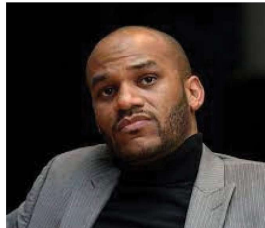


**Jacqueline Woo**  
Senior Associates, Executive Team,  
Lesar Development Consultants

## Downtown Crenshaw Rising: Creating a Development Paradigm of Community Ownership and Control

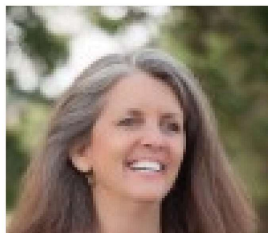


**Phil Hart**  
CEO  
Hart Realty Advisors



**Damien Good**  
Executive Director  
Downtown Crenshaw Rising

## Social Impact Investor Funds



**Lora O'Connor**  
Founder  
Inspired Collaborations



**Dr. Linda Lopez**  
CEO  
Impact Strategies Inc.



**Diane Manuel**  
Director, Foundation & Client  
Relationships  
Adasina Social Capital

## Recycling Black Dollars





**Crystal Mitchell**  
Co-Director/Founder  
Recycling Black Dollars/The  
Community Briefing



**Robin Billups**  
The Connector  
The Billups Group



**Greg J. Sneed**  
Owner & CEO  
LifeSaver Financial Services

## Private Capital and the Housing Crisis



**Eman Dalili**  
Senior Associate, Investments  
SoLa Impact



**Candice Hung**  
Director, Real Estate  
Development  
SoLa Impact

## Public Investment to Stabilize Small Businesses Near Transit



**Michelle Banks-Ordone**  
Senior Manager  
LA Metro



**Shela Tobias-Daniel**  
Executive Director, California  
Pollution Control Financing Authority  
State Treasurer's Office

## Solutions for WeHo (TAP)



**Brian League**  
Property Development Manager  
City of West Hollywood

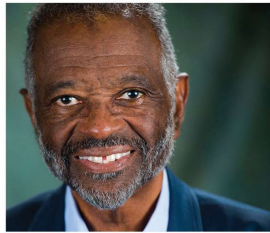


**Eric Natwig**  
President  
New West Partners, Inc.



**Walter Maynard**  
Director of Asset Management  
West Hollywood Community  
Housing Corporation

## 10 Principles for Racial Equity in Development



**Michael Banner**  
President and CEO  
Los Angeles LDC



**Van Scott**  
Chief of Special Projects  
CRCD Partners, LLC



**Michael H. Anderson, AIA, NOMA**  
Principal  
Anderson Barker

## Innovative and Scalable: Capital That Helps Us All





**Ada Arevalo**  
Founder & CEO  
iimpact



**Trevor Faye**  
Founder & CEO  
Kopa

## Black Business Collective Making Historic Moves



**Nate Carter**  
CEO  
WC Real Estate Consulting



**Teree Carter**  
COO  
WC Real Estate Consulting

## Elevating People of Color in CRE



**Mack Major, III**  
COO  
1RACE Real Estate Services Firm



**Jashaun Bowens**  
Real Estate Investment Analyst  
1RACE Real Estate Services Firm



**Victor Egu**  
Director of Acquisitions & Investments  
1RACE Real Estate Services Firm

## Unfound Opportunities: Investing in Underserved Communities



**Rachel Moscovich**  
Senior Managing Consultant,  
Sustainability  
Ramboll



**Laura Benson Vandeweghe**  
Chief Innovation Officer  
Decro Corporation

## Ingewood and Hollywood Park Update



**Royce K. Jones**  
Managing Senior Principal  
Kane, Ballmer & Berkman



**Jason Gannon**  
Managing Director,  
SoFi Stadium and Hollywood Park

## Affordable Housing: Design and Financing Trends



**Greg Comanor**  
Partner



**Nedda Ismaili**  
SVP, Team Lead in Commercial



**Rose DiSarno, AIA**  
Design Director

## The Broker Connection



**Jamie Brooks**  
Senior Vice President  
CBRE



**James Daugherty**  
Chief Investment Officer  
Daugherty Real Estate

## JPMorgan Chase: Utilizing Technology to Support the Under Supported



**Antwon Ali**  
Vice President  
JPMorgan Chase & Co

## UrbanPlan: Explore Simulated Redevelopment



**Jim Suhr**  
President  
James Suhr & Associates LLC



**Rebecca Martinez**  
Marketing Manager  
Omgivning



**Lori Summers**  
Director, Design & Development  
Avenida Partners

## Transitioning from High Net Worth to Institutional Capital



**Amy Ko,**  
COO  
Belay Investment Group

## LA28 Olympics Impact



**Dr. Rhianna C. Rogers**  
Director, Center to Advance  
Racial Equity Policy  
RAND Corporation



**Tim Kawahara**  
Executive Director  
UCLA Ziman Center for Real  
Estate

# AGENDA

**7:30 – 8:00 AM REGISTRATION, BREAKFAST AND NETWORKING**

**8:00 – 8:15 AM WELCOME REMARKS**

**8:15 – 9:00 AM KEYNOTE**

**FIONA MA, CPA**  
*Treasurer, State of California*

**TIFFANY HADDISH**  
*Actor, Comedian, Writer and Producer*

**9:00 – 10:00 AM PLENARY PANEL**

**Robert Jue**  
*CEO, Standard Real Estate Investment*

**Jennifer McElyea**  
*Managing Partner, Ethos Real Estate*

**Josh Childress**  
*CEO, Landspire Investments*

**10:00 AM – 12:00 PM ROUND TABLES**

*Four 25-minute sessions with 5 minute breaks in between. Please refer to map.*

**7:30 AM -12:00 PM MARKETPLACE EXHIBITION OPEN**

## REGISTER NOW!

### THANK YOU TO OUR 2023 URBAN MARKETPLACE SPONSORS

PLATINUM LEVEL

JPMORGAN CHASE & CO.

SILVER LEVEL



BRONZE LEVEL



#UM2023



Los Angeles

LA.ULI.ORG